

AIRSIDE PRODUCTS



FAN COIL

Our fan coil units have become a hall mark for de-central air treatment, with top levels of comfort and truly impressive cost-effectiveness. A selection of versatile fan coil units assures that we offer you the perfect solution for each of your individual requirements.

Practical orientation

Our fan coil units offer an extensive portfolio of solutions for all applications involving de-central air handling.

Effectiveness

Our fan coil units guarantee cosy and comfortable room atmosphere.

Space saving

Our fan coil units assure optimal use of available space by their design and installation possibilities.

Flexible

Depending on the model type, the customer enjoys a selection among possibilities of media connection to the heat exchangers as well as the possibility of implementing heating and cooling with 2 or 4 conductor operation.

Quietness

Sophisticated systems mean that fan coil units are characterized by a minimum of noise emission.

Functionality

Our fan coil units offer highly functional controller concepts and optimal interfacing with building management systems.

Stylishness

The modern appealing design of fan coil units is truly impressive.

Cost effectiveness

Our fan coil units have become the effective standard solution in many and various industrial segments for comfortable economical air conditioning.

Profitability

Our fan coil units operate with low maintenance and follow-up costs.

HOW TO READ THE MODELS

FC 02 CC 23 / 1 P1 L

L: Left
R: Right

Static Pressure:
P1: 12Pa; HP1: 80/60Pa
P2: 30Pa; HP2: 130/110Pa
P3: 50Pa; HP3: 180/160Pa

Power Supply:
1=220~230V/50Hz/1 Phase
2=220~230V/60Hz/1 Phase
5=110~115V/60Hz/1 Phase

Coil Layout:
22: 2 Pipes-2 Rows
23: 2 Pipes-3 Rows
24: 2 Pipes-4 Rows
43: 4 Pipes-3 Rows Cooling+1 Row Heating

Product Type:
CC: Ceiling Concealed without plenum/filter (STD Series)
CD: Ceiling Concealed with down return plenum & filter (STD Series)
CB: Ceiling Concealed with back return plenum & filter (STD Series)
VC: Vertical Concealed with feet & filter (STD Series)
CE: Ceiling Exposed with grey-white air inlet grille, with feet & filter (STD Series)
VE: Vertical Exposed with black air inlet grille, with feet & filter (STD Series)
CT: Ceiling Concealed with back return plenum & filter Ultra-Thin (180mm) Type (STD Series)
CL: Ceiling Concealed Large Drain Pan Type without plenum/filter
CLB/CLD: Ceiling Concealed Large Drain Pan Type with back/down return plenum
CHB/CHD: Ceiling Concealed Large Air Flow & High Static Pressure Type with back/down return plenum
DCB/DVE: District Cooling (High Temp. Rise) Fan Coil CB/VE Type
CF: Ceiling Floor Type
WM: Wall Mounted Type
CAS: Cassette One-Way
CAD: Cassette Two-Way
CAQ2/CAQ4: Cassette Four-Way 2 Pipe/4 Pipe System
CAX: Cassette Six-Way

Air Flow: x100 CFM

Fan Coil

Standard Fan Coil



Ceiling Concealed

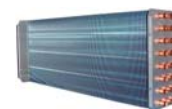


Vertical Concealed

Air Flow: 400~2450m³/h
200~1400CFM
Cooling Capacity: 1.45~13.08kW

Features and benefits

- High energy efficiency with seamless copper tube mechanically expanded to aluminum fins.
- Easy installation by configuration of ABS fan blade and shell. (Optional)

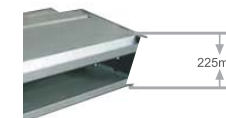


- High reliability and fire resistance by galvanized steel fan blade and shell.

- Space saving thanks to compact design and unit body thickness is only 225mm.



- V shape drain pan design guarantees the highest drainage efficiency.



- Quiet operation thanks to DIDW forward curve centrifugal fan and NSK axis.



- Optional static pressure 12-30/30-50Pa meets wide application requirements.

Standard Fan Coil



Ceiling Exposed



Vertical Exposed

Air Flow: 400~2450m³/h
200~1400CFM
Cooling Capacity: 1.45~13.08kW

Features and benefits

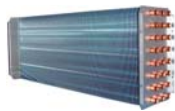
- Stylish and elegant design for high quality individual application.



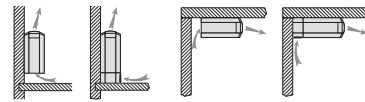
- Space saving with unit body thickness only 245mm.



- High energy efficiency with seamless copper tube mechanically expanded into aluminum fins.



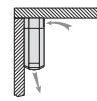
- All-in-one design guarantees great flexibility of installation both in ceiling suspended and vertical placed.



Cooling/Heating

Cooling/Heating

- More comfortable with wide air diffusion thanks to rotary air outlet grill max. reaches 75°.



Heating

- Quiet operation as low as 28 dB(A) ensures exquisite working and living environment.

Specification

2 Pipe 2 Rows

Performance		Model	FC02	FC03	FC04	FC05	FC06	FC08	FC10	FC12	FC14
Air Flow	H	CFM	235	347	441	541	635	876	1029	1212	1441
		m³/h	400	590	750	920	1080	1490	1750	2060	2450
		M	CFM	182	265	329	406	476	659	776	906
	L	m³/h	310	450	560	690	810	1120	1320	1540	1840
		CFM	118	176	218	271	318	441	512	606	724
		m³/h	200	300	370	460	540	750	870	1030	1230
Total Cooling Capacity	H	kW	1.97	2.67	3.45	4.23	5.02	7.12	8.46	9.83	11.11
	M	kW	1.65	2.24	2.95	3.59	4.26	6.07	7.21	8.37	9.50
	L	kW	1.45	1.99	2.57	3.17	3.76	5.35	6.36	7.39	8.36
Sensible Cooling Capacity	H	kW	1.39	1.84	2.41	2.97	3.59	5.00	6.75	6.94	7.96
	M	kW	1.20	1.58	2.05	2.55	3.07	4.25	5.89	6.11	6.94
	L	kW	0.94	1.19	1.56	2.05	2.49	3.30	44.77	4.65	5.42
Heating Capacity	H	kW	2.91	3.71	5.18	6.35	7.54	10.70	12.73	14.75	16.72
	M	kW	2.48	3.16	4.42	5.27	6.39	9.11	10.85	12.58	14.24
	L	kW	2.18	2.80	3.88	4.76	5.64	8.06	9.57	11.08	12.58
Power Input	12Pa-H	W	34	46	55	70	87	117	140	181	223
	30Pa-H	W	42	56	70	81	101	149	165	202	241
	50Pa-H	W	46	65	82	89	109	163	201	228	286
Max Current	A	0.21	0.30	0.37	0.40	0.50	0.74	0.91	1.04	1.30	
Electrical Heater (Opt.)	kW	-	-	-	-	-	-	-	-	-	-
Static Pressure	Pa	12Pa/30Pa/50Pa									
Noise Level	12Pa-H	dB(A)	35	37	39	41	43	44	46	48	50
	30Pa-H	dB(A)	38	40	42	44	45	46	48	50	52
	50Pa-H	dB(A)	40	42	44	45	47	48	50	52	54
Water Flow	kg/h	350	470	600	740	870	1230	1460	1700	1910	
	l/s	0.097	0.131	0.167	0.206	0.242	0.342	0.406	0.472	0.531	
Water Resistance	kPa	10	18	19	23	24	23	36	21	35	
Fan Type	Forward curve centrifugal fan										
Motor	Type	Four speed asynchronous fan motor									
	Insulation	Class B									
	Power Supply	220~230V/1PH/50 or 60Hz									
Coil	Type	Seamless copper mechanically expanded into aluminum fins									
	Rows	2									
	Max. Working Pressure	1.6 MPa									
Inlet/Outlet Water Pipe	3/4" FPT										
Condensate Water Pipe	Φ 20										
Unit Dimension W/D/H	Ceiling Concealed	645*450*225	795*450*225	875*450*225	945*450*225	1095*450*225	1395*450*225	1545*450*225	1695*450*225	1995*450*225	
	Ceiling Exposed	850*505*245	1000*505*245	1080*505*245	1150*505*245	1300*505*245	1600*505*245	1750*505*245	1900*505*245	2200*505*245	
	Vertical Concealed	745*225*584	895*225*584	975*225*584	1045*225*584	1195*225*584	1495*225*584	1645*225*584	1795*225*584	2095*225*584	
Packing Dimension W/D/H	Ceiling Concealed	850*245*639	1000*245*639	1080*245*639	1150*245*639	1300*245*639	1600*245*639	1750*245*639	1900*245*639	2200*245*639	
	Ceiling Exposed	665*470*235	815*470*235	895*470*235	965*470*235	1115*470*235	1415*470*235	1565*470*235	1710*470*235	2015*470*235	
	Vertical Concealed	870*520*260	1020*520*260	1100*520*260	1170*520*260	1320*520*260	1620*520*260	1770*520*260	1920*520*260	2220*520*260	
Unit Weight kg	Ceiling Concealed	870*240*600	910*240*600	990*240*600	1060*240*600	1210*240*600	1510*240*600	1660*240*600	1810*240*600	2110*240*600	
	Ceiling Exposed	14	18	19	20	22	34	36	38	39	
	Vertical Concealed	23	28	29	30	34	48	51	53	55	
Gross Weight kg	Ceiling Exposed	12	15	16	17	18	29	30	32	33	
	Vertical Concealed	24	29	30	31	35	49	52	54	56	
	Vertical Exposed	15	19	20	21	23	35	37	39	40	
Vertical Exposed	Ceiling Exposed	24	29	30	31	35	49	52	54	56	
	Vertical Concealed	13	16	17	18	19	30	31	33	34	
	Vertical Exposed	25	30	31	32	36	50	53	55	57	

Note:

1. Testing condition:

Cooling: entering air temp 27°C DB/19.5°C WB; entering water temp 7°C, leaving water temp 12°C;

Heating: entering air temp 21°C; entering water temp 60°C, the same water flow as in cooling;

2. Sound pressure level are measured in acoustic room, position of the measure point is 1m in the front and 1m below the vertical center line of the unit

3. Static pressure is measured without filter and air outlet.

Specification

2 Pipe 3 Rows

Performance		Model	FC02	FC03	FC04	FC05	FC06	FC08	FC10	FC12	FC14
Air Flow	H	CFM	235	347	441	541	635	876	1029	1212	1441
		m ³ /h	400	590	750	920	1080	1490	1750	2060	2450
		CFM	182	265	329	406	476	659	776	906	1082
	M	m ³ /h	310	450	560	690	810	1120	1320	1540	1840
		CFM	118	176	218	271	318	441	512	606	724
		m ³ /h	200	300	370	460	540	750	870	1030	1230
Total Cooling Capacity	H	kW	2.09	3.06	3.89	4.74	5.73	7.79	9.35	11.10	13.08
	M	kW	1.78	2.57	3.32	4.03	4.89	6.64	7.95	9.45	11.16
	L	kW	1.55	2.29	2.91	3.56	4.28	5.85	0.71	8.35	9.83
Sensible Cooling Capacity	H	kW	1.47	2.11	2.72	3.33	4.10	5.47	7.46	7.84	9.37
	M	kW	1.29	1.81	2.31	2.86	3.53	4.65	6.49	6.90	8.15
	L	kW	1.00	1.37	1.77	2.30	2.83	3.61	5.00	5.25	6.37
Heating Capacity	H	kW	3.13	4.25	5.84	7.12	8.58	11.69	14.03	16.64	19.63
	M	kW	2.54	3.40	4.73	5.77	6.95	9.47	11.50	13.64	15.90
	L	kW	1.91	2.55	3.50	4.34	5.15	7.13	8.56	9.98	11.78
Power Input	12Pa-H	W	34	46	55	70	87	117	140	181	223
	30Pa-H	W	42	56	70	81	101	149	165	202	241
	50Pa-H	W	46	65	82	89	109	163	201	228	286
Max Current	A	0.21	0.30	0.37	0.40	0.50	0.74	0.91	1.04	1.30	
Electrical Heater (Opt.)	kW	1.0/1.5/2.0	1.5/2.0/2.5	2.0/3.0/3.5	2.0/3.0/4.0	2.0/3.5/4.5	2.0/3.5/4.5	2.0/3.5/4.5	2.0/3.5/4.5	3.0/4.0/6.0	
Static Pressure	Pa	12Pa/30Pa/50Pa									
Noise Level	12Pa-H	dB(A)	36	38	40	42	44	45	47	49	51
	30Pa-H	dB(A)	39	41	43	45	46	47	49	51	53
	50Pa-H	dB(A)	41	43	45	46	48	49	51	53	55
Water Flow	kg/h	370	540	680	830	990	1350	1610	1920	2250	
	l/s	0.103	0.150	0.189	0.231	0.275	0.375	0.447	0.533	0.625	
Water Resistance	kPa	10	18	19	23	24	23	36	21	35	
Fan Type		Forward curve centrifugal fan									
Motor	Type	Four speed asynchronous fan motor									
	Insulation	Class B									
	Power Supply	220~230V/1Ph/50 or 60Hz									
Coil	Type	Seamless copper mechanically expanded into aluminum fins									
	Rows	3									
	Max Working Pressure	1.6 MPa									
Inlet/Outlet Water Pipe	3/4" FPT										
Condensate Water Pipe	φ 20										
Unit Dimension W/D/H	Ceiling Concealed	645*450*225	795*450*225	875*450*225	945*450*225	1095*450*225	1395*450*225	1545*450*225	1695*450*225	1995*450*225	
	Ceiling Exposed	850*245*505	1000*245*505	1080*245*505	1150*245*505	1300*245*505	1600*245*505	1750*245*505	1900*245*505	2200*245*505	
	Vertical Concealed	745*225*584	895*225*584	975*225*584	1045*225*584	1195*225*584	1495*225*584	1645*225*584	1795*225*584	2095*225*584	
Packing Dimension W/D/H	Ceiling Concealed	660*460*240	810*460*240	890*460*240	960*460*240	1110*460*240	1410*460*240	1560*460*240	1710*460*240	2010*460*240	
	Ceiling Exposed	870*260*520	1020*260*520	1100*260*520	1170*260*520	1320*260*520	1620*260*520	1770*260*520	1920*260*520	2220*260*520	
	Vertical Concealed	870*240*600	910*240*600	990*240*600	1060*240*600	1210*240*600	1510*240*600	1660*240*600	1810*240*600	2110*240*600	
Unit Weight kg	Ceiling Concealed	15	19	20	21	23	36	38	40	42	
	Ceiling Exposed	24	29	30	31	35	50	53	55	58	
	Vertical Concealed	15	19	20	21	23	36	38	40	42	
Gross Weight kg	Ceiling Concealed	16	20	21	22	24	37	39	42	44	
	Ceiling Exposed	25	30	31	32	36	51	54	57	60	
	Vertical Concealed	16	20	21	22	24	37	39	42	44	

Note:
 1. Testing condition:
 Cooling: entering air temp 27°C DB/19.5°C WB; entering water temp 7°C, leaving water temp 12°C;
 Heating: entering air temp 21°C; entering water temp 60°C, the same water flow as in cooling;
 2. Sound pressure level are measured in acoustic room, position of the measure point is 1m in the front and 1m below the vertical center line of the unit
 3. Static pressure is measured without filter and air outlet.

Specification

4 Pipe (3+1) Rows

Performance		Model	FC02	FC03	FC04	FC05	FC06	FC08	FC10	FC12	FC14
Air Flow	H	CFM	235	347	441	541	635	876	1029	1212	1441
		m ³ /h	400	590	750	920	1080	1490	1750	2060	2450
		CFM	182	265	329	406	476	659	776	906	1082
	M	m ³ /h	310	450	560	690	810	1120	1320	1540	1840
		CFM	118	176	218	271	318	441	512	606	724
		m ³ /h	200	300	370	460	540	750	870	1030	1230
Total Cooling Capacity	H	kW	2.03	2.98	3.78	4.63	5.62	7.56	9.13	10.88	12.83
	M	kW	1.72	2.5	3.22	3.94	4.79	6.44	7.76	9.27	10.95
	L	kW	1.50	2.23	3.82	3.48	4.19	5.68	6.93	8.19	9.64
Sensible Cooling Capacity	H	kW	1.47	2.11	2.72	3.33	4.10	5.47	7.46	7.84	9.37
	M	kW	1.22	1.77	2.26	2.80	3.44	4.54	6.34	6.74	7.96
	L	kW	0.97	1.33	1.71	2.16	2.75	3.50	4.85	5.10	6.18
Heating Capacity	H	kW	1.94	2.71	3.64	4.66	5.44	7.76	9.36	11.04	12.57
	M	kW	1.66	2.31	3.11	3.95	4.61	6.62	7.97	9.40	10.71
	L	kW	1.46	2.05	2.73	3.50	4.08	5.84	7.04	8.29	9.44
Power Input	12Pa-H	W	40	53	62	78	95	125	147	198	238
	30Pa-H	W	48	62	76	88	109	161	179	212	256
	50Pa-H	W	56	72	88	95	110	174	211	240	297
Max Current	A	0.25	0.33	0.40	0.43	0.50	0.79	0.96	1.09	1.35	
Electrical Heater (Opt.)	kW	1.0/1.5/2.0	1.5/2.0/2.5	2.0/3.0/3.5	2.0/3.0/4.0	2.0/3.5/4.5	2.0/3.5/4.5	2.0/3.5/4.5	2.0/3.5/4.5	3.0/4.0/6.0	
Static Pressure	Pa	12Pa/30Pa/50Pa									
Noise Level	12Pa-H	dB(A)	37	39	41	43	45	46	48	50	52
	30Pa-H	dB(A)	40	42	44	46	47	49	50	52	54
	50Pa-H	dB(A)	42	44	46	47	49	50	52	54	56
Water Flow	Cooling 3R	kg/h	370	540	680	830	990	1350	1610	1920	2250
	Heating 1R	kg/h	230	310	420	540	630	890	1080	1270	1450
	Heating 1R	l/s	0.064	0.086	0.117	0.150	0.175	0.247	0.300	0.353	0.403
Water Resistance	Cooling 3R	kPa	10	18	19	23	24	23	36	21	35
	Heating 1R	kPa	5	12	17	28	25	16	18	23	29
	Heating 1R	kPa	5	12	17	28	25	16	18	23	29
Fan Type		Forward curve centrifugal fan									
Motor	Type	Four speed asynchronous fan motor									
	Insulation	Class B									
	Power Supply	220~230V/1Ph/50 or 60Hz									
Coil	Type	Seamless copper mechanically expanded into aluminum fins									
	Rows	4									
	Max Working Pressure	1.6 MPa									
Inlet/Outlet Water Pipe	3/4" FPT										
Condensate Water Pipe	φ 20										
Unit Dimension W/D/H	Ceiling Concealed	645*450*225	795*450*225	875*450*225	945*450*225	1095*450*225	1395*450*225	1545*450*225	1695*450*225	1995*450*225	
	Ceiling Exposed	850*245*505	1000*245*505	1080*245*505	1150*245*505	1300*245*505	1600*245*505	1750*245*505	1900*245*505	2200*245*505	
	Vertical Concealed	745*225*584	895*225*584	975*225*584	1045*225*584	1195*225*584	1495*225*584	1645*225*584	1795*225*584	2095*225*584	
Packing Dimension W/D/H	Ceiling Concealed	660*460*240	810*460*240	890*460*240	960*460*240	1110*460*240	1410*460*240	1560*460*240	1710*460*240	2010*460*240	
	Ceiling Exposed	870*260*520	1020*260*520	1100*260*520	1170*260*520	1320*260*520	1620*260*520	1770*260*520	1920*260*520	2220*260*520	
	Vertical Concealed	870*240*600	910*240*600	990*240*600	1060*240*600	1210*240*600	1510*240*600	1660*240*600	1810*240*600	2110*240*600	
Unit Weight kg	Ceiling Concealed	17	22	23	24	27	39	41	43	46	
	Ceiling Exposed	26	32	33	35	39	53	56	58	62	
	Vertical Concealed	17	22	23	24	27	39	41	43	46	
Gross Weight kg	Ceiling Concealed	18	23	24	25	28	40	42	45	48	
	Ceiling Exposed	27	33	34	36	40	54	57	59	63	
	Vertical Concealed	18	23	24	25	28	40	42	45	48	

Note:
 1. Testing condition:
 Cooling: entering air temp 27°C DB/19.5°C WB; entering water temp 7°C, leaving water temp 12°C;
 Heating: entering air temp 21°C; entering water temp 60°C, the same water flow as in cooling;
 2. Sound pressure level are measured in acoustic room, position of the measure point is 1m in the front and 1m below the vertical center line of the unit
 3. Static pressure is measured without filter and air outlet.

4 Pipes (2+2) Rows

Specification		Model	FC02	FC03	FC04	FC05	FC06	FC08	FC10	FC12	FC14
Air Flow	H	CFM	235	347	441	541	635	876	1029	1212	1441
		m³/h	400	590	750	920	1080	1490	1750	2060	2450
		CFM	182	265	329	406	476	659	776	906	1082
	M	m³/h	310	450	560	690	810	1120	1320	1540	1840
		CFM	118	176	218	271	318	441	512	606	724
		m³/h	200	300	370	460	540	750	870	1030	1230
L	CFM	118	176	218	271	318	441	512	606	724	
	m³/h	200	300	370	460	540	750	870	1030	1230	
	CFM	118	176	218	271	318	441	512	606	724	
Total Cooling Capacity	H	kW	1.60	2.34	3.00	4.11	4.71	6.28	7.35	9.83	11.29
	M	kW	1.36	1.97	2.55	3.49	4.00	5.35	6.25	8.37	9.63
	L	kW	1.19	1.75	2.24	3.08	3.53	4.71	5.51	7.39	8.48
Sensible Cooling Capacity	H	kW	1.16	1.66	2.16	2.96	3.44	4.54	6.01	7.08	8.25
	M	kW	0.96	1.39	1.79	2.48	2.89	3.77	5.10	6.09	7.01
	L	kW	0.76	1.04	1.36	1.92	2.30	2.91	3.90	4.60	5.44
Heating Capacity	H	kW	2.40	3.51	4.50	6.16	7.06	9.42	11.02	14.74	16.93
	M	kW	2.04	2.95	3.83	5.23	6.00	8.02	9.37	12.55	14.44
	L	kW	1.78	2.62	3.36	4.62	5.29	7.06	8.26	11.08	12.72
Power Input	12 Pa-H	W	40	53	62	78	95	125	147	198	238
	30 Pa-H	W	48	62	76	88	109	161	179	212	256
	50 Pa-H	W	56	72	88	95	110	174	211	240	297
Max Current	A	0.25	0.33	0.40	0.43	0.50	0.79	0.96	1.09	1.35	
Electrical Heater (Opt.)	kW	1.0/1.5/2.0	1.5/2.0/2.5	2.0/3.0/3.5	2.0/3.0/4.0	2.0/3.5/4.5	2.0/3.5/4.5	2.0/3.5/4.5	2.0/3.5/4.5	3.0/4.0/6.0	
Static Pressure	Pa	12/30/50 Pa									
Noise Level	12 Pa-H	dB(A)	37	39	41	43	45	46	48	50	52
	30 Pa-H	dB(A)	40	42	44	46	47	48	50	52	54
	50 Pa-H	dB(A)	42	44	46	47	49	50	52	54	56
Water Flow	Cooling 2R	kg/h	280	400	520	710	810	1080	1270	1690	1950
	Heating 2R	l/s	0.078	0.111	0.144	0.197	0.225	0.30	0.353	0.469	0.542
	Cooling 2R	kg/h	280	400	520	710	810	1080	1270	1690	1950
Heating 2R	l/s	0.078	0.111	0.144	0.197	0.225	0.30	0.353	0.469	0.542	
	l/s	0.078	0.111	0.144	0.197	0.225	0.30	0.353	0.469	0.542	
Water Resistance	Cooling 2R	kPa	18	14	24	17	21	28	24	38	43
	Heating 2R	kPa	18	14	24	17	21	28	24	38	43
Fan Type	Forward curve centrifugal fan										
Motor	Type	Four speed asynchronous fan motor									
	Insulation	Class B									
	Power Supply	220~230V/50 or 60Hz/1Ph									
Coil	Type	Seamless copper mechanically expanded into aluminum fins									
	Rows	4									
	Max. Working Pressure	1.6 MPa									
Inlet/Outlet Water Pipe	3/4" FPT										
Condensate Water Pipe	φ 20										
Unit Dimension	mm(W*D*H)	645*450*225	795*450*225	875*450*225	945*450*225	1095*450*225	1395*450*225	1545*450*225	1695*450*225	1995*450*225	
Packing Dimension	mm(W*D*H)	660*460*240	810*460*240	890*460*240	960*460*240	1110*460*240	1410*460*240	1560*460*240	1710*460*240	2010*460*240	
Unit Weight	kg	17	22	23	24	27	39	41	43	46	
Gross Weight	kg	18	23	24	25	28	40	42	45	48	

Note:

1. Testing condition:

Cooling: entering air temp 27°C DB/19.5°C WB; entering water temp 7°C, leaving water temp 12°C;

Heating: entering air temp 21°C; entering water temp 60°C, the same water flow as in cooling;

2. Sound pressure level are measured in acoustic room, position of the measure point is 1m in the front and 1m below the vertical center line of the unit

3. Static pressure is measured without filter and air outlet.

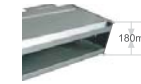
Ultra-Thin Type



Air Flow: 340~1020m³/h
200~600CFM
Cooling Capacity: 1.46~5.66kW

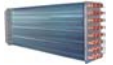
Features and benefits

• Great space saving and installation flexibility as unit height is only 180mm.



- Fresh air by high efficiency synthetic fiber washable filter.
- High reliability and fire resistance by galvanized steel fan blade and shell.
- V shape drain pan design guarantees the highest drainage efficiency.
- Optional static pressure 12-30/30-50Pa meets wide application requirement.

• High energy efficiency with seamless copper tube mechanically expanded to aluminum fins.



- Easy installation by configuration of ABS fan blade and shell.
- Quiet operation thanks to DIDW forward curve centrifugal fan and NSK axis.



Specification

Specification		Model	FC02	FC03	FC04	FC05	FC06
Air Flow	H	CFM	200	300	400	500	600
		m³/h	340	510	680	850	1020
		CFM	160	230	320	370	470
	M	m³/h	280	400	550	640	800
		CFM	120	170	230	280	350
		m³/h	200	300	400	480	600
Total Cooling Capacity	H	kW	2.05	2.90	4.18	4.70	5.66
	M	kW	1.75	2.46	3.55	3.98	4.80
	L	kW	1.46	2.03	2.90	3.30	3.90
Sensible Cooling Capacity	H	kW	1.35	1.94	2.83	3.11	3.83
	M	kW	1.07	1.53	2.22	2.45	3.01
	L	kW	0.86	1.17	1.71	1.90	2.30
Heating Capacity	H	kW	3.10	4.35	6.02	7.05	8.35
	M	kW	2.60	3.69	5.10	5.99	7.10
	L	kW	2.10	3.05	4.20	4.90	5.80
Power Input	12Pa-H	W	42	56	76	90	115
	30Pa-H	W	50	66	87	104	147
Max Current	A	0.25	0.34	0.43	0.51	0.73	
Electrical Heater (Opt.)	kW	1.0/1.5/2.0	1.5/2.0/2.5	2.0/3.0/3.5	2.0/3.0/4.0	2.0/3.5/4.5	
Static Pressure	Pa	12Pa/30Pa					
Noise Level	12Pa-H	dB(A)	35	37	40	42	44
	30Pa-H	dB(A)	38	40	43	45	46
Water Flow	kg/h	370	500	730	820	980	
	l/s	0.103	0.139	0.207	0.228	0.272	
Water Resistance	kPa	7	15	32	38	46	
Fan Type	Forward curve centrifugal fan						
Motor	Type	Four speed asynchronous fan motor					
	Insulation	Class E					
	Power Supply	220~230V/1Ph/50 or 60Hz					
Coil	Type	Seamless copper mechanically expanded into aluminum fins					
	Rows	2					
	Max. Working Pressure	1.6 MPa					
Inlet/Outlet Water Pipe	3/4" FPT						
Condensate Water Pipe	3/4" MPT						
Net Dimension	mm(W/D/H)	728*450*180	878*450*180	1028*450*180	1178*450*180	1378*450*180	
Packing Dimension	mm(W/D/H)	750*470*200	900*470*200	1050*470*200	1200*470*200	1400*470*200	
Net Weight	kg	16	18	21	23	25	
Gross Weight	kg	17	19	22	24	26	

1. Testing condition:

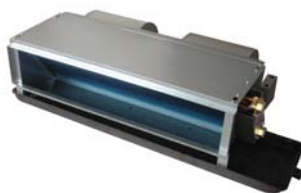
Cooling: entering air temp 27°C DB/19.5°C WB; entering water temp 7°C, leaving water temp 12°C;

Heating: entering air temp 21°C; entering water temp 60°C, the same water flow as in cooling;

2. Sound pressure level are measured in acoustic room, position of the measure point is 1m in the front and 1m below the vertical center line of the unit

3. Static pressure is measured without filter and air outlet.

Large Drain Pan Type



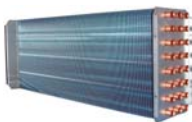
Air Flow: 170~2420 m³/h
100~1424 CFM
Cooling Capacity: 1.40~14.99 kW

Features and benefits

- MEGA unique design: Drainage vent is set at the rock bottom of the coil, besides, the copper tube is going in/out straightly into the Aluminum fins, which makes sure that water can be completely drained out of the coil in winter time to avoid frozen damage.



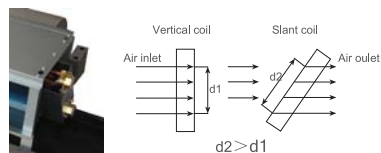
- High efficiency with seamless copper tube mechanically expanded to aluminum fins.



- Tight combination between fan blower and its casing reduces the air resistance, therefore, the efficiency is increased, at the same time, noise level is reduced.



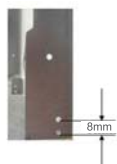
- Slant positioned coil can enlarge the air flow facing area in order to increase the unit's efficiency. The drawer design of coil makes it simple to change the unit pipe connection between right and left, which makes the installation and repairing work much convenient.



- High reliability and fire resistance by galvanized steel fan blade and shell.



- 8 mm slope of the drain pan ensures the condensing water going smoothly to the lowest drainage outlet point to be drained out.



Specification

2 Pipes 2 Rows

Specification		Model	FC02	FC03	FC04	FC05	FC06	FC08	FC10	FC12	FC14
Air Flow	H	CFM	224	312	424	529	635	876	1029	1271	1424
		m ³ /h	380	530	720	900	1080	1490	1750	2160	2420
		CFM	168	234	318	397	476	723	849	1048	1153
	M	m ³ /h	285	398	540	675	810	1229	1444	1782	1960
		CFM	112	156	212	265	318	548	644	794	890
		m ³ /h	190	265	360	450	540	931	1094	1350	1513
L	CFM	112	156	212	265	318	548	644	794	890	
	m ³ /h	190	265	360	450	540	931	1094	1350	1513	
	CFM	112	156	212	265	318	548	644	794	890	
Total Cooling Capacity	H	kW	1.92	2.74	3.68	4.53	5.40	6.59	7.60	9.32	10.01
	M	kW	1.73	2.48	3.36	4.15	4.85	5.60	6.94	8.40	9.20
	L	kW	1.40	2.04	2.71	3.34	3.90	4.85	5.60	6.79	7.43
Sensible Cooling Capacity	H	kW	1.64	2.32	3.12	4.23	4.81	5.79	6.71	8.13	8.65
	M	kW	1.38	1.96	2.64	3.66	4.06	4.61	5.72	6.76	7.30
	L	kW	0.97	1.33	1.82	2.27	2.57	3.25	3.81	4.62	4.98
Heating Capacity	H	kW	3.07	4.39	5.89	7.25	8.64	10.54	12.20	14.92	16.02
	M	kW	2.67	3.81	4.94	6.49	7.31	8.22	9.65	11.73	12.74
	L	kW	2.21	3.24	4.36	5.36	6.22	7.76	8.96	10.86	11.89
Power Input	12 Pa-H	W	28	34	55	68	87	125	152	185	205
	30 Pa-H	W	42	55	68	87	108	142	174	210	253
	50 Pa-H	W	49	66	84	100	118	174	210	250	300
Max Current	A	0.25	0.30	0.32	0.42	0.55	0.85	1.40	1.20	2.00	
Static Pressure	Pa	12/30/50 Pa									
Noise Level	12 Pa-H	dB(A)	34	35	38	42	43	44	46	48	49
	30 Pa-H	dB(A)	37	38	41	44	45	46	48	48	49
	50 Pa-H	dB(A)	42	44	46	47	49	50	52	54	56
Water Flow	kg/h	360	482	655	814	936	1285	1397	1768	1870	
	l/s	0.100	0.134	0.182	0.226	0.260	0.357	0.388	0.491	0.519	
Water Resistance	kPa	20	20	20	30	40	40	40	40	50	
Fan Type		Forward curve centrifugal fan									
Motor	Type	Four speed asynchronous fan motor									
	Insulation	Class E									
	Power Supply	220~230V/50 or 60Hz/1Ph									
Coil	Type	Seamless copper mechanically expanded into aluminum fins									
	Rows	2									
	Max. Working Pressure	1.6 MPa									
Inlet/Outlet Water Pipe		3/4" FPT									
Condensate Water Pipe		3/4" MPT									
Unit Dimension	mm(W*D*H)	680*493*240	880*493*240	980*493*240	1080*493*240	1180*493*240	1390*493*240	1480*493*240	1880*493*240	1880*493*240	
Packing Dimension	mm(W*D*H)	690*505*250	890*505*250	990*505*250	1090*505*250	1190*505*250	1390*505*250	1490*505*250	1890*505*250	1890*505*250	
Unit Weight	kg	11.0	11.9	15.0	16.0	17.4	22.1	24.0	29.2	30.4	
Gross Weight	kg	12.2	13.3	16.6	17.7	19.2	24.4	26.3	32.2	33.4	

Note:

1. Testing condition:

Cooling: entering air temp 27°C DB/19.5°C WB; entering water temp 7°C, leaving water temp 12°C;

Heating: entering air temp 21°C; entering water temp 60°C, the same water flow as in cooling;

2. Sound pressure level are measured in acoustic room, position of the measure point is 1m in the front and 1m below the vertical center line of the unit

3. Static pressure is measured without filter and air outlet.

2 Pipes 3 Rows

Specification		Model	FC02	FC03	FC04	FC05	FC06	FC08	FC10	FC12	FC14
Air Flow	H	CFM	200	300	400	500	600	800	1000	1200	1400
		m³/h	340	510	680	850	1020	1360	1700	2040	2380
		CFM	150	225	300	375	450	660	825	990	1134
	M	m³/h	255	382	510	637	765	1122	1402	1683	1927
		CFM	100	150	200	250	300	500	625	750	875
		m³/h	170	255	340	425	510	850	1062	1275	1487
L	CFM	200	300	400	500	600	800	1000	1200	1400	
	m³/h	340	510	680	850	1020	1360	1700	2040	2380	
	CFM	150	225	300	375	450	660	825	990	1134	
Total Cooling Capacity	H	kW	2.17	3.12	4.09	4.75	6.07	8.21	9.38	11.65	12.49
		kW	1.95	2.82	3.74	4.35	5.45	7.47	8.54	10.50	11.48
		kW	1.58	2.32	3.01	3.50	4.38	6.04	6.89	8.48	9.27
Sensible Cooling Capacity	H	kW	1.86	2.64	3.47	4.43	5.41	7.21	8.28	10.17	10.79
		kW	1.56	2.23	2.94	3.83	4.56	6.15	7.04	8.45	9.11
		kW	1.09	1.51	2.02	2.38	2.89	4.05	4.69	5.77	6.21
Heating Capacity	H	kW	3.50	5.01	6.74	7.62	9.76	13.18	14.81	18.03	19.70
		kW	3.04	4.36	5.65	6.82	8.25	11.30	12.88	15.74	17.05
		kW	2.52	3.71	4.99	5.64	7.03	9.49	10.66	13.16	13.99
Power Input	12 Pa-H	W	28	34	55	68	87	125	152	185	205
		W	42	55	68	87	108	142	174	210	253
		W	49	66	84	100	118	174	210	250	300
Max Current	A		0.25	0.30	0.32	0.42	0.55	0.85	1.40	1.20	2.00
Static Pressure	Pa		12/30/50 Pa								
Noise Level	12 Pa-H	dB(A)	34	35	38	42	43	44	46	48	49
		dB(A)	37	38	41	44	45	46	48	48	49
		dB(A)	42	44	46	47	49	50	52	54	56
Water Flow	kg/h		373	536	703	851	1044	1412	1613	2004	2148
		l/s	0.104	0.149	0.195	0.236	0.290	0.392	0.448	0.557	0.597
Water Resistance	kPa	20	20	20	30	40	40	40	40	40	50
Fan Type		Forward curve centrifugal fan									
Motor	Type	Four speed asynchronous fan motor									
	Insulation	Class E									
	Power Supply	220-230V/50 or 60Hz/1Ph									
Coil	Type	Seamless copper mechanically expanded into aluminum fins									
	Rows	3									
	Max. Working Pressure	1.6 MPa									
Inlet/Outlet Water Pipe		3/4" FPT									
Condensate Water Pipe		3/4" MPT									
Unit Dimension	mm(W*D*H)	680*493*240	880*493*240	980*493*240	1080*493*240	1180*493*240	1380*493*240	1480*493*240	1880*493*240	1880*493*240	1880*493*240
Packing Dimension	mm(W*D*H)	690*505*250	890*505*250	990*505*250	1090*505*250	1190*505*250	1390*505*250	1490*505*250	1890*505*250	1890*505*250	1890*505*250
Unit Weight	kg	11.4	12.5	15.5	16.5	17.9	23.9	25.7	30.7	31.6	31.6
Gross Weight	kg	12.6	13.8	17.0	18.2	19.7	26.2	28.1	33.7	34.6	34.6

Note:

1. Testing condition:
Cooling: entering air temp 27°C DB/19.5°C WB; entering water temp 7°C, leaving water temp 12°C;
Heating: entering air temp 21°C; entering water temp 60°C, the same water flow as in cooling;
2. Sound pressure level are measured in acoustic room, position of the measure point is 1m in the front and 1m below the vertical center line of the unit
3. Static pressure is measured without filter and air outlet.

4 Pipes 3+1 Rows

Specification		Model	FC02	FC03	FC04	FC05	FC06	FC08	FC10	FC12	FC14
Air Flow	H	CFM	200	300	400	500	600	800	1000	1200	1400
		m³/h	340	510	680	850	1020	1360	1700	2040	2380
		CFM	150	225	300	375	450	660	825	990	1134
	M	m³/h	255	382	510	637	765	1122	1402	1683	1927
		CFM	100	150	200	250	300	500	625	750	875
		m³/h	170	255	340	425	510	850	1062	1275	1487
L	CFM	200	300	400	500	600	800	1000	1200	1400	
	m³/h	340	510	680	850	1020	1360	1700	2040	2380	
	CFM	150	225	300	375	450	660	825	990	1134	
Total Cooling Capacity	H	kW	2.02	2.90	3.80	4.42	5.65	7.64	8.72	10.83	11.62
		kW	1.81	2.62	3.48	4.05	5.07	6.95	7.94	9.77	10.68
		kW	1.47	2.16	2.80	3.26	4.07	5.62	6.41	7.89	8.62
Sensible Cooling Capacity	H	kW	1.73	2.46	3.22	4.12	5.03	6.71	7.70	9.46	10.03
		kW	1.45	2.08	2.74	3.56	4.24	5.72	6.54	7.86	8.47
		kW	1.01	1.40	1.88	2.21	2.69	3.76	4.36	5.36	5.78
Heating Capacity	H	kW	1.70	2.21	3.15	3.96	5.19	5.66	6.90	8.12	9.93
		kW	1.48	1.92	2.64	3.54	4.39	4.85	6.00	7.09	8.59
		kW	1.22	1.64	2.33	2.93	3.74	4.08	4.97	5.93	7.05
Power Input	12 Pa-H	W	28	34	55	68	87	125	152	185	205
		W	42	55	68	87	108	142	174	210	253
		W	49	66	84	100	118	174	210	250	300
Max Current	A		0.25	0.30	0.32	0.42	0.55	0.85	1.40	1.20	2.00
Static Pressure	Pa		12/30/50 Pa								
Noise Level	12 Pa-H	dB(A)	34	35	38	42	43	44	46	48	49
		dB(A)	37	38	41	44	45	46	48	48	49
		dB(A)	42	44	46	47	49	50	52	54	56
Water Flow	kg/h		347	498	654	791	971	1313	1500	1864	1998
		l/s	0.096	0.138	0.182	0.220	0.270	0.365	0.417	0.518	0.555
		kg/h	146	190	271	341	446	487	593	698	854
Water Resistance	kPa	Cooling 3R	20	20	20	30	40	40	40	40	50
		Heating 1R	5	12	17	28	25	16	18	23	29
		Heating 1R	0.041	0.053	0.075	0.095	0.124	0.135	0.165	0.194	0.237
Fan Type		Forward curve centrifugal fan									
Motor	Type	Four speed asynchronous fan motor									
	Insulation	Class E									
	Power Supply	220-230V/50 or 60Hz/1Ph									
Coil	Type	Seamless copper mechanically expanded into aluminum fins									
	Rows	4									
	Max. Working Pressure	1.6 MPa									
Inlet/Outlet Water Pipe		3/4" FPT									
Condensate Water Pipe		3/4" MPT									
Unit Dimension	mm(W*D*H)	680*493*240	880*493*240	980*493*240	1080*493*240	1180*493*240	1380*493*240	1480*493*240	1880*493*240	1880*493*240	1880*493*240
Packing Dimension	mm(W*D*H)	690*505*250	890*505*250	990*505*250	1090*505*250	1190*505*250	1390*505*250	1490*505*250	1890*505*250	1890*505*250	1890*505*250
Unit Weight	kg	12.8	14.1	17.0	18.0	19.4	26.7	28.4	33.2	33.8	33.8
Gross Weight	kg	14.0	15.4	18.5	19.7	21.2	29.0	30.8	36.2	36.8	36.8

Note:

1. Testing condition:
Cooling: entering air temp 27°C DB/19.5°C WB; entering water temp 7°C, leaving water temp 12°C;
Heating: entering air temp 21°C; entering water temp 60°C, the same water flow as in cooling;
2. Sound pressure level are measured in acoustic room, position of the measure point is 1m in the front and 1m below the vertical center line of the unit
3. Static pressure is measured without filter and air outlet.

4 Pipes 2+2 Rows

Specification		Model	FC02	FC03	FC04	FC05	FC06	FC08	FC10	FC12	FC14
Air Flow	H	CFM	200	300	400	500	600	800	1000	1200	1400
		m³/h	340	510	680	850	1020	1360	1700	2040	2380
		CFM	150	225	300	375	450	660	825	990	1134
	M	m³/h	255	382	510	637	765	1122	1402	1683	1927
		CFM	100	150	200	250	300	500	625	750	875
		m³/h	170	255	340	425	510	850	1062	1275	1487
L	CFM	100	150	200	250	300	500	625	750	875	
	m³/h	170	255	340	425	510	850	1062	1275	1487	
	CFM	100	150	200	250	300	500	625	750	875	
Total Cooling Capacity	H	kW	1.92	2.74	3.68	4.53	5.40	6.59	7.60	9.32	10.01
	M	kW	1.73	2.48	3.36	4.15	4.85	5.60	6.94	8.40	9.20
	L	kW	1.40	2.04	2.71	3.34	3.90	4.85	5.60	6.79	7.43
Sensible Cooling Capacity	H	kW	1.64	2.32	3.12	4.23	4.81	5.79	6.71	8.13	8.65
	M	kW	1.38	1.96	2.64	3.66	4.06	4.61	5.72	6.76	7.30
	L	kW	0.97	1.33	1.82	2.27	2.57	3.25	3.81	4.62	4.98
Heating Capacity	H	kW	3.07	4.39	5.89	7.25	8.64	10.54	12.20	14.92	16.02
	M	kW	2.67	3.81	4.94	6.49	7.31	8.22	9.65	11.73	12.74
	L	kW	2.21	3.24	4.36	5.36	6.22	7.76	8.96	10.86	11.89
Power Input	12 Pa-H	W	28	34	55	68	87	125	152	185	205
	30 Pa-H	W	42	55	68	87	108	142	174	210	253
	50 Pa-H	W	49	66	84	100	118	174	210	250	300
Max Current	A	0.25	0.30	0.32	0.42	0.55	0.85	1.40	1.20	2.00	
Static Pressure	Pa	12/30/50 Pa									
Noise Level	12 Pa-H	dB(A)	34	35	38	42	43	44	46	48	49
	30 Pa-H	dB(A)	37	38	41	44	45	46	48	48	49
	50 Pa-H	dB(A)	42	44	46	47	49	50	52	54	56
Water Flow	Cooling 2R	kg/h	360	482	655	814	936	1285	1397	1768	1870
		l/s	0.100	0.134	0.182	0.226	0.260	0.357	0.388	0.491	0.519
	Heating 2R	kg/h	360	482	655	814	936	1285	1397	1768	1870
Water Resistance	Cooling 2R	kPa	20	20	20	30	40	40	40	40	50
	Heating 2R	kPa	20	20	20	30	40	40	40	40	50
Fan Type		Forward curve centrifugal fan									
Motor	Type	Four speed asynchronous fan motor									
	Insulation	Class E									
	Power Supply	220-230V/50 or 60Hz/1Ph									
Coil	Type	Seamless copper mechanically expanded into aluminum fins									
	Rows	4									
	Max. Working Pressure	1.6 MPa									
Inlet/Outlet Water Pipe	3/4" FPT										
Condensate Water Pipe	3/4" MPT										
Unit Dimension	mm(W*D*H)	680*493*240	880*493*240	980*493*240	1080*493*240	1180*493*240	1380*493*240	1480*493*240	1880*493*240	1880*493*240	1880*493*240
Packing Dimension	mm(W*D*H)	690*505*250	890*505*250	990*505*250	1090*505*250	1190*505*250	1390*505*250	1490*505*250	1890*505*250	1890*505*250	1890*505*250
Unit Weight	kg	12.8	14.1	17.0	18.0	19.4	26.7	28.4	33.2	33.8	
Gross Weight	kg	14.0	15.4	18.5	19.7	21.2	29.0	30.8	36.2	36.8	

Note:

- Testing condition:
Cooling: entering air temp 27°C DB/19.5°C WB; entering water temp 7°C, leaving water temp 12°C;
Heating: entering air temp 21°C; entering water temp 60°C, the same water flow as in cooling;
- Sound pressure level are measured in acoustic room, position of the measure point is 1m in the front and 1m below the vertical center line of the unit
- Static pressure is measured without filter and air outlet.

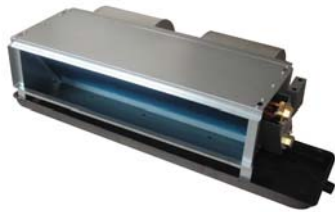
2 Pipe 4 Rows

Specification		Model	FC02	FC03	FC04	FC05	FC06	FC08	FC10	FC12	FC14
Air Flow	H	CFM	200	288	382	482	565	759	947	1141	1400
		m³/h	340	490	650	820	960	1290	1610	1940	2380
		CFM	150	225	300	375	450	660	825	990	1134
	M	m³/h	255	382	510	637	765	1122	1402	1683	1927
		CFM	100	150	200	250	300	500	625	750	875
		m³/h	170	255	340	425	510	850	1062	1275	1487
L	CFM	100	150	200	250	300	500	625	750	875	
	m³/h	170	255	340	425	510	850	1062	1275	1487	
	CFM	100	150	200	250	300	500	625	750	875	
Total Cooling Capacity	H	kW	2.56	3.84	5.00	5.94	7.60	9.36	11.00	13.75	14.99
	M	kW	2.30	3.47	4.57	5.44	6.82	8.52	10.01	12.39	13.78
	L	kW	1.86	2.86	3.68	4.38	5.48	6.89	8.08	10.01	11.13
Heating Capacity	H	kW	4.13	6.17	8.24	9.98	12.22	15.03	17.37	21.28	23.64
	M	kW	3.59	5.37	6.91	8.53	10.33	12.89	15.11	18.58	20.46
	L	kW	2.97	4.57	6.10	7.05	8.80	10.82	12.50	15.53	16.79
Power Input	12 Pa-H	kW	28	34	55	68	87	125	152	185	205
	30 Pa-H	kW	42	55	68	87	108	142	174	210	253
	50 Pa-H	kW	49	66	84	100	118	174	210	250	300
Max Current	A	0.25	0.30	0.32	0.42	0.55	0.85	1.40	1.20	2.00	
Static Pressure	Pa	12/30/50 Pa									
Noise Level	12 Pa-H	dB(A)	34	35	38	42	43	44	46	48	49
	30 Pa-H	dB(A)	37	38	41	44	45	46	48	48	49
	50 Pa-H	dB(A)	42	44	46	47	49	50	52	54	56
Fan Type		Forward curve centrifugal fan									
Motor	Type	Four speed asynchronous fan motor									
	Insulation	Class E									
	Power Supply	220-230V/50 or 60Hz/1Ph									
Coil	Type	Seamless copper mechanically expanded into aluminum fins									
	Rows	4									
	Max. Working Pressure	1.6 MPa									
Inlet/Outlet Water Pipe	3/4" FPT										
Condensate Water Pipe	3/4" MPT										
Unit Dimension	mm(W*D*H)	680*493*240	880*493*240	980*493*240	1080*493*240	1180*493*240	1380*493*240	1480*493*240	1880*493*240	1880*493*240	1880*493*240
Packing Dimension	mm(W*D*H)	690*505*250	890*505*250	990*505*250	1090*505*250	1190*505*250	1390*505*250	1490*505*250	1890*505*250	1890*505*250	1890*505*250
Unit Weight	kg	14.0	17.2	19.2	20.4	23.1	28.5	31.4	37.5	42.7	
Gross Weight	kg	15.2	18.5	20.7	22.1	24.9	30.8	33.8	40.5	45.7	

Note:

- Testing condition:
Cooling: entering air temp 27°C DB/19.5°C WB; entering water temp 7°C, leaving water temp 12°C;
Heating: entering air temp 21°C; entering water temp 60°C, the same water flow as in cooling;
- Sound pressure level are measured in acoustic room, position of the measure point is 1m in the front and 1m below the vertical center line of the unit
- Static pressure is measured without filter and air outlet.

Ultra-Thin Large Drain Pan Type



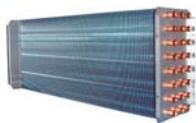
Air Flow: 190~1200 m³/h
112~706 CFM
Cooling Capacity: 1.31~6.30 kW

Features and benefits

- MEGA unique design: Drainage vent is set at the rock bottom of the coil, besides, the copper tube is going in/out straightly into the Aluminum fins, which makes sure that water can be completely drained out of the coil in winter time to avoid frozen damage.



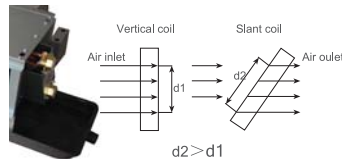
- High efficiency with seamless copper tube mechanically expanded to aluminum fins.



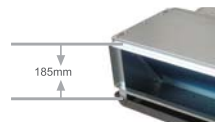
- Tight combination between fan blower and its casing reduces the air resistance, therefore, the efficiency is increased, at the same time, noise level is reduced.



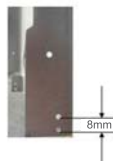
- Slant positioned coil can enlarge the air flow facing area in order to increase the unit's efficiency. The drawer design of coil makes it simple to change the unit pipe connection between right and left, which makes the installation and repairing work much convenient.



- Space saving thanks to compact design and unit body thickness is only 185mm.



- 8 mm slope of the drain pan ensures the condensing water going smoothly to the lowest drainage outlet point to be drained out.



Specification

2 Pipes 2 Rows

Specification		Model	FC02	FC03	FC04	FC05	FC07
Air Flow	H	CFM	200	300	382	476	706
		m³/h	340	510	650	810	1200
		CFM	168	234	302	377	561
	M	m³/h	285	398	513	641	953
		CFM	112	156	201	252	374
		m³/h	190	265	342	428	635
L	CFM	112	156	201	252	374	
	m³/h	190	265	342	428	635	
	CFM	112	156	201	252	374	
Total Cooling Capacity	H	kW	1.80	2.70	3.60	4.50	6.30
	M	kW	1.62	2.44	3.29	4.12	5.70
	L	kW	1.31	2.01	2.65	3.32	4.60
Sensible Cooling Capacity	H	kW	1.53	2.35	3.12	3.92	5.47
	M	kW	1.30	1.99	2.68	3.31	4.66
	L	kW	0.99	1.57	1.98	2.56	3.59
Heating Capacity	H	kW	2.70	4.05	5.40	6.75	9.45
	M	kW	2.35	3.52	4.53	6.04	8.06
	L	kW	1.94	3.00	4.00	5.00	6.80
Power Input	12 Pa-H	W	37	52	62	76	118
	30 Pa-H	W	44	59	72	87	140
Max Current	A	0.25	0.34	0.43	0.51	0.73	
Static Pressure	Pa	12/30 Pa					
Noise Level	12 Pa-H	dB(A)	37	39	41	43	46
	30 Pa-H	dB(A)	40	42	44	46	48
Water Flow	kg/h	320	482	635	795	1095	
	l/s	0.089	0.134	0.176	0.221	0.304	
Water Resistance	kPa	15	15	25	30	40	
Fan Type		Forward curve centrifugal plastic fan blower with galvanized cover					
Motor	Type	Four speed asynchronous fan motor					
	Insulation	Class B					
	Power Supply	220~230V/50 or 60Hz/1Ph					
Coil	Type	Seamless copper mechanically expanded into aluminum fins					
	Rows	2					
	Max. Working Pressure	1.6 MPa					
Inlet/Outlet Water Pipe		3/4" FPT					
Condensate Water Pipe		Φ 20					
Unit Dimension	mm(W*D*H)	740*480*185	840*480*185	1040*480*185	1140*480*185	1340*480*185	
Packing Dimension	mm(W*D*H)	800*500*200	900*500*200	1100*500*200	1200*500*200	1400*500*200	
Unit Weight	kg	13	14.5	15.5	18	25	
Gross Weight	kg	15	17	18.5	20	27	

Note:

1. Testing condition:

Cooling: entering air temp 27°C DB/19.5°C WB; entering water temp 7°C, leaving water temp 12°C;

Heating: entering air temp 21°C; entering water temp 60°C, the same water flow as in cooling;

2. Sound pressure level are measured in acoustic room, position of the measure point is 1m in the front and 1m below the vertical center line of the unit

3. Static pressure is measured without filter and air outlet.

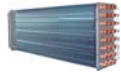
Large Air Flow and High Static Pressure Type



Air Flow: 803~6260m³/h
472~3682CFM
Cooling Capacity: 5.06~39.70kW

Features and benefits

- High energy efficiency with seamless copper tube mechanically expanded to aluminum fins.
- Lower noise by hot galvanized sheet steel with fine acoustic insulation layer.
- V shape extended drain pan design greatly increases the drainage efficiency.
- Fresh air by high efficiency synthetic fiber washable filter or aluminum filter.
- Optional static pressure 60~180 Pa covers most of the application requirements.
- High reliability and fire resistance by galvanized steel fan blade and shell.



Specification

2 Pipe 3 Rows

Specification		Model	FC06	FC08	FC10	FC12	FC15	FC18	FC25	FC31	FC36
Air Flow	H	CFM	629	841	1053	1262	1579	1894	2526	3159	3682
		m ³ /h	1070	1430	1790	2145	2685	3220	4295	5370	6260
	M	CFM	541	732	895	1085	1374	1648	2173	2685	3167
		m ³ /h	920	1244	1522	1845	2336	2801	3694	4565	5384
	L	CFM	472	622	790	959	1185	1421	1920	2338	2688
		m ³ /h	803	1058	1343	1630	2014	2415	3264	3974	4570
Total Cooling Capacity	H	kW	6.10	7.50	9.00	11.50	13.50	15.80	20.80	27.00	31.40
	M	kW	5.49	6.68	8.19	10.58	11.88	13.75	18.30	24.03	27.32
	L	kW	5.06	6.30	7.65	9.43	11.21	13.11	17.47	22.68	26.38
Sensible Cooling Capacity	H	kW	4.60	5.60	6.50	8.30	10.00	11.80	15.30	19.60	23.10
	M	kW	4.00	4.82	5.66	7.22	8.40	9.91	13.01	16.66	19.17
	L	kW	3.50	4.31	5.07	6.31	7.60	9.09	11.63	15.09	17.79
Heating Capacity	H	kW	9.30	11.50	14.10	18.10	20.90	25.00	32.10	42.20	49.20
	M	kW	8.09	10.12	12.55	15.75	18.81	22.25	29.21	38.40	43.30
	L	kW	7.72	9.66	11.84	15.20	17.35	21.00	27.29	34.60	40.84
Power Input	80Pa-H	W	180	280	340	390	470	710	800	980	1170
	130Pa-H	W	240	370	450	520	620	830	950	1130	1350
	180Pa-H	W	320	500	600	680	800	950	1240	1470	1760
Max Current	A	1.5	2.3	2.7	3.1	3.6	4.3	5.6	6.7	8.0	
Static Pressure	Pa	80Pa/130Pa/180Pa									
Noise Level	80Pa-H	dB(A)	48	49	50	52	55	56	60	61	62
	130Pa-H	dB(A)	51	52	53	55	58	59	62	64	65
	180Pa-H	dB(A)	53	55	56	58	60	62	65	67	67
Water Flow		kg/h	1000	1200	1500	1900	2200	2600	3400	4500	5200
		l/s	0.278	0.333	0.417	0.528	0.611	0.722	0.944	1.250	1.444
Water Resistance	kPa	8.7	11.7	16.8	25.4	35	43.5	25.4	39.5	48.7	
Fan Type		Forward curve centrifugal fan									
Motor	Type	Three speed asynchronous fan motor									
	Insulation	Class B									
	Power Supply	220~230V/1Ph/50 or 60Hz									
Coil	Type	Seamless copper mechanically expanded into aluminum fins									
	Rows	3									
	Max. Working Pressure	1.6 MPa									
Inlet/Outlet Water Pipe		1" MPT					1 1/4" MPT				
Condensate Water Pipe		3/4" MPT									
Net Dimension	mm(W/D/H)	1180*835*365	1180*835*365	1280*835*365	1480*835*365	1580*835*365	1680*835*365	1780*935*465	2080*935*465	2280*935*465	
Packing Dimension	mm(W/D/H)	1260*885*415	1260*885*415	1360*885*415	1560*885*415	1660*885*415	1760*885*415	1860*985*415	2160*985*415	2360*985*415	
Net Weight	kg	54	54	57	65	68	71	91	103	111	
Gross Weight	kg	56	56	60	68	71	74	94	107	115	

Specification

2 Pipe 4 Rows

Specification		Model	FC06	FC08	FC10	FC12	FC15	FC18	FC25	FC31	FC36
Air Flow	H	CFM	629	841	1053	1262	1579	1894	2526	3159	3682
		m ³ /h	1070	1430	1790	2145	2685	3220	4295	5370	6260
	M	CFM	541	732	895	1085	1374	1648	2173	2685	3167
		m ³ /h	920	1244	1522	1845	2336	2801	3694	4565	5384
	L	CFM	472	622	790	959	1185	1421	1920	2338	2688
		m ³ /h	803	1058	1343	1630	2014	2415	3264	3974	4570
Total Cooling Capacity	H	kW	7.60	10.10	11.80	14.20	16.40	18.60	26.30	35.00	39.70
	M	kW	6.84	8.99	10.74	13.06	14.43	16.18	23.14	31.15	34.54
	L	kW	6.31	8.48	10.03	11.64	13.61	15.44	22.09	29.40	33.35
Sensible Cooling Capacity	H	kW	5.80	7.50	8.70	10.60	12.50	14.10	19.30	25.60	29.80
	M	kW	5.05	6.45	7.57	9.22	10.50	11.84	16.41	21.76	24.73
	L	kW	4.41	5.78	6.79	8.06	9.50	10.86	14.67	19.71	22.95
Heating Capacity	H	kW	12.00	15.50	18.30	22.40	25.00	28.50	41.30	55.40	61.60
	M	kW	10.44	13.64	16.29	19.49	22.50	25.37	37.58	50.41	54.21
	L	kW	9.96	13.02	15.37	18.82	20.75	23.94	35.11	45.43	51.13
Power Input	60Pa-H	W	210	320	400	480	550	750	850	1090	1280
	110Pa-H	W	260	410	500	570	640	850	960	1230	1460
	160Pa-H	W	350	550	650	770	860	970	1260	1560	1840
Max Current	A	1.6	2.5	3.0	3.5	3.9	4.4	5.7	7.1	8.4	
Static Pressure	Pa	60Pa/110Pa/160Pa									
Noise Level	60Pa-H	dB(A)	48	50	51	53	56	57	60	62	64
	110Pa-H	dB(A)	50	52	53	55	58	60	63	65	66
	160Pa-H	dB(A)	53	56	56	58	61	63	66	68	70
Water Flow		kg/h	1300	1700	2000	2500	2800	3200	4500	6000	6800
		l/s	0.361	0.472	0.556	0.694	0.778	0.889	1.250	1.667	1.889
Water Resistance	kPa	12.3	16.2	23.5	32.9	42.1	48.7	30.2	42.3	53.4	
Fan Type		Forward curve centrifugal fan									
Motor	Type	Three speed asynchronous fan motor									
	Insulation	Class B									
	Power Supply	220~230V/1Ph/50 or 60Hz									
Coil	Type	Seamless copper mechanically expanded into aluminum fins									
	Rows	4									
	Max. Working Pressure	1.6 MPa									
Inlet/Outlet Water Pipe		1" MPT					1 1/4" MPT				
Condensate Water Pipe		3/4" MPT									
Net Dimension	mm(W/D/H)	1180*835*365	1180*835*365	1280*835*365	1480*835*365	1580*835*365	1680*835*365	1780*935*465	2080*935*465	2280*935*465	
Packing Dimension	mm(W/D/H)	1260*885*415	1260*885*415	1360*885*415	1560*885*415	1660*885*415	1760*885*415	1860*985*415	2160*985*415	2360*985*415	
Net Weight	kg	56	56	59	67	70	73	94	108	116	
Gross Weight	kg	58	58	62	70	73	76	97	112	120	

Note:

1. Testing condition:
Cooling: entering air temp 27°C DB/19.5°C WB; entering water temp 7°C, leaving water temp 12°C;
Heating: entering air temp 21°C; entering water temp 60°C, the same water flow as in cooling;
2. Sound pressure level are measured in acoustic room, position of the measure point is 1m in the front and 1m below the vertical center line of the unit
3. Static pressure is measured without filter and air outlet.

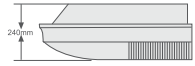
Ceiling Floor Type



Air Flow: 510~2380m³/h
300~1400CFM
Cooling Capacity: 1.73~12.6kW

Features and benefits

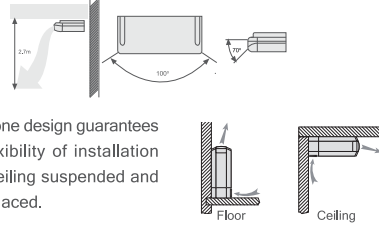
- Stylish and streamline design for high quality individual application.
- More comfortable by wider air diffusion (Up-Down 70o) and automatically flapping. Quiet operation thanks to DIDW forward curve centrifugal fan and NSK axis.



- High energy efficiency with seamless copper tube mechanically expanded to aluminum fins.
- More fresh air by high efficiency synthetic fiber washable filter.



- All-in-one design guarantees great flexibility of installation both in ceiling suspended and vertical placed.



Specification

Specification		Model	FC03	FC04	FC05	FC06	FC08	FC10	FC12	FC14			
Air Flow	H	CFM	300	400	500	600	800	1000	1200	1400			
		m ³ /h	510	680	850	1020	1360	1700	2040	2380			
		CFM	262	347	435	522	697	871	1044	1218			
	M	CFM	445	590	740	888	1,185	1,480	1,775	2,070			
		m ³ /h	226	303	379	456	606	756	909	1059			
		CFM	385	515	645	775	1030	1285	1545	1800			
Total Cooling Capacity	H	kW	2.70	3.60	4.50	5.40	7.20	9.00	10.80	12.60			
	M	kW	2.16	2.88	3.60	4.32	5.76	7.20	8.64	10.08			
	L	kW	1.73	2.30	2.88	3.46	4.61	5.76	6.91	8.06			
Sensible Cooling Capacity	H	kW	2.03	2.70	3.38	4.05	5.40	6.75	8.10	9.45			
	M	kW	1.62	2.16	2.70	3.24	4.32	5.40	6.48	7.56			
	L	kW	1.30	1.73	2.16	2.59	3.46	4.32	5.18	6.05			
Heating Capacity	H	kW	4.05	5.40	6.75	8.10	10.80	13.50	16.20	18.90			
	M	kW	3.24	4.32	5.40	6.48	8.64	10.80	12.96	15.12			
	L	kW	2.59	3.46	4.32	5.18	6.91	8.64	10.37	12.10			
Power Input	W	45	50	80	110	120	150	170	188				
Running Current	A	0.19	0.23	0.36	0.49	0.54	0.68	0.82	0.9				
Noise Level	dB(A)-H/M/L	39/37/36	41/38/35	43/40/38	45/42/39	46/43/40	48/45/42	50/47/45	51/48/45				
Water Flow	kg/h	520	620	860	980	1220	1580	1920	2100				
	l/s	0.144	0.172	0.239	0.272	0.339	0.439	0.533	0.583				
Water Resistance	kPa	14	16	18	22	25	39	44	44				
Fan Type		Centrifugal Fan											
Motor	Type	Split Permanent Capacitor Motor											
	Insulation	Class B											
	Power Supply	220~230V/1Ph/50 or 60Hz											
	Power Consumption (W)	18	20	32	44	48	60	68	75				
Coil	Type	Seamless copper mechanically expanded into aluminum fins											
	Rows	2											
	Max. Working Pressure	1.4 MPa											
Inlet/Outlet Water Pipe		3/4" FPT											
Condensate Water Pipe		φ 25											
Net Dimension		mm(W/D/H)			905*673*243			1288*673*243			1672*673*243		
Packing Dimension		mm(W/D/H)			995*765*311			1375*765*311			1760*765*311		
Net Weight		kg			25			40			45		
Gross Weight		kg			30			45			50		

Note: 1. Testing condition: Cooling: entering air temp 27°C DB/19.5°C WB; entering water temp 7°C, leaving water temp 12°C;
Heating: entering air temp 21°C; entering water temp 60°C, the same water flow as in cooling;
2. Sound pressure level are measured in acoustic room, position of the measure point is 1m in the front and 1m below the vertical center line of the unit
3. Static pressure is measured without filter and air outlet.

1-Way Cassette Type



Air Flow: 340~800m³/h
200~471CFM
Cooling Capacity: 1.1~4.0kW

Features and benefits

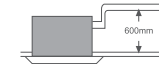
- Stylish and elegant design in harmony with top interior decoration requirement.
- Much more fresh air by utilizing high efficiency synthetic fiber washable filter.



- Maximum utilization of room space with recessed ceiling installation.
- Newly designed pressure-stable centrifugal fan ensures the lowest operation noise.



- High efficiency drainage system with water lifting pump up to 600mm.



- Compact design as unit height only 235mm, easy for installation.

Specification

Specification		Model	FC02	FC03	FC04	FC05
Air Flow	H	CFM	200	300	400	471
		m ³ /h	340	510	680	800
		CFM	159	235	306	382
	M	CFM	270	400	520	650
		m ³ /h	112	176	235	294
		CFM	190	300	400	500
Total Cooling Capacity	H	kW	1.90	2.70	3.60	4.00
	M	kW	1.50	2.10	2.80	3.30
	L	kW	1.00	1.60	2.10	2.60
Sensible Cooling Capacity	H	kW	1.30	1.90	2.50	2.80
	M	kW	1.10	1.60	2.10	2.30
	L	kW	0.80	1.30	1.70	1.80
Heating Capacity	H	kW	2.70	4.10	5.40	6.40
	M	kW	2.20	3.20	4.10	5.20
	L	kW	1.50	2.40	3.20	4.00
Power Input	W	45	54	62	70	
Running Current	A	0.2	0.24	0.28	0.31	
Noise Level	dB(A)-H/M/L	39/36/30	39/36/30	40/37/31	42/39/37	
Water Flow	kg/h	330	480	625	690	
	l/s	0.092	0.133	0.174	0.192	
Water Resistance	kPa	10	15	18	20	
Fan Type		Centrifugal Fan				
Motor	Type	Split Permanent Capacitor Motor				
	Insulation	Class B				
	Power Supply	220~230V/1Ph/50 or 60Hz				
	Power Consumption (W)	20	20	25	35	
Coil	Type	Seamless copper mechanically expanded into aluminum fins				
	Rows	2				
	Max. Working Pressure	1.4 MPa				
Inlet/Outlet Water Pipe		3/4" FPT				
Condensate Water Pipe		φ 25				
Net Dimension		Unit		850*400*235		
		Panel		1045*465*30		
Packing Dimension	Unit		1095*535*310			
	Panel		1095*535*310			
Net Weight	Unit		23			
	Panel		23			
	Unit		25.5			
Gross Weight	Unit		25.5			
	Panel		25.5			

Note: 1. Testing condition: Cooling: entering air temp 27°C DB/19.5°C WB; entering water temp 7°C, leaving water temp 12°C;
Heating: entering air temp 21°C; entering water temp 60°C, the same water flow as in cooling;
2. Sound pressure level are measured in acoustic room, position of the measure point is 1m in the front and 1m below the vertical center line of the unit
3. Static pressure is measured without filter and air outlet.

4-Way Cassette Type



Air Flow: 340~2380m³/h
200~1400CFM
Cooling Capacity: 1.1~12.6kW

Features and benefits

• Maximum utilization of room space with recessed ceiling installation.

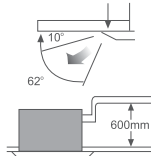


• Round and optimized engineering designed coils enables the most effective energy exchanging.

• Newly designed pressure-stable radial fan ensures the lowest operation noise.



• 4-way air blowing and wide angle flapping guarantees average energy diffusion.



• High efficiency drainage system with water lifting pump up to 600mm.

• Stylish and elegant design in harmony with top interior decoration requirement.

• Much more fresh air by utilizing high efficiency synthetic fiber washable filter.

Specification

Specification		Model	FC02	FC03	FC04	FC05	FC06	FC08	FC10	FC12	FC14	FC17	
Air Flow	H	CFM	200	300	400	500	600	800	1000	1200	1400	1700	
		m ³ /h	340	510	680	850	1020	1360	1700	2040	2380	2890	
	M	CFM	171	235	318	412	500	653	824	982	1147	1388	
		m ³ /h	290	400	540	700	850	1110	1400	1670	1950	2360	
	L	CFM	118	171	235	324	400	506	647	765	894	1082	
		m ³ /h	200	290	400	550	680	860	1100	1300	1520	1840	
Total Cooling Capacity	H	kW	2.0	2.7	3.7	4.5	5.6	7.0	9.1	10.8	12.6	15.3	
	M	kW	1.56	2.34	3.08	3.81	4.51	6.19	7.60	9.22	10.51	12.76	
	L	kW	1.37	2.06	2.70	3.36	4.04	5.52	6.73	8.23	9.39	11.4	
Sensible Cooling Capacity	H	kW	1.36	2.10	2.79	3.37	4.09	5.70	6.78	8.24	9.32	11.32	
	M	kW	1.09	1.68	2.19	2.60	3.13	4.30	5.30	6.49	7.30	8.87	
	L	kW	0.88	1.32	1.74	2.12	2.53	3.49	4.31	5.31	5.86	7.12	
Heating Capacity	H	kW	2.8	4.2	5.6	7.0	8.4	11.2	13.9	16.7	19.5	23.7	
	M	kW	2.19	3.21	4.38	5.44	6.55	8.69	11.00	13.26	15.30	18.6	
	L	kW	1.90	2.81	3.75	4.67	5.57	7.41	9.32	11.31	12.89	1.67	
Power Input	W	39	52	62	76	96	132	152	189	220	330		
Running Current	A	0.18	0.24	0.27	0.33	0.38	0.58	0.78	0.80	1.07	1.43		
Noise Level	dB(A)-H/M/L	37/34/30	39/36/32	41/38/35	43/39/36	45/42/39	46/43/39	47/44/40	50/46/42	52/48/44	57/52/47		
Water Flow	kg/h	345	470	640	780	970	1260	1710	1920	2160	2640		
	l/s	0.096	0.131	0.178	0.217	0.269	0.350	0.475	0.533	0.600	0.733		
Water Resistance	kPa	7	9	11	16	19	17	19	22	22	36		
Fan Type	Type	Centrifugal Fan											
	Insulation	Split Permanent Capacitor Motor											
Motor	Power Supply	Class B											
	Power Consumption (W)	39	52	62	76	96	132	152	189	220	330		
Coil	Type	Seamless copper mechanically expanded into aluminum fins											
	Max. Working Pressure	1.6 MPa 3/4" FPT Φ 26											
Inlet/Outlet Water Pipe	Infrared Remote Controller (Optional: Wired Controller)												
Net Dimension	Unit	580*580*250			710*710*290			832*832*290			950*950*290		
	Panel	680*680*30			830*830*30			980*980*30			1140*1140*30		
Packing Dimension	Unit	675*675*270			800*800*310			925*925*310			1045*1045*310		
	Panel	720*720*75			860*860*75			1010*1010*75			1170*1170*75		
Net Weight	Unit	18			22			31			48		
	Panel	2			2.5			3			4		
Gross Weight	Unit	19			24			33			50		
	Panel	3			3.5			4			5		

Note: 1. Testing condition: Cooling: entering air temp 27°C DB/19.5°C WB; entering water temp 7°C, leaving water temp 12°C;

Heating: entering air temp 21°C; entering water temp 60°C, the same water flow as in cooling;

2. Sound pressure level are measured in acoustic room, position of the measure point is 1m in the front and 1m below the vertical center line of the unit

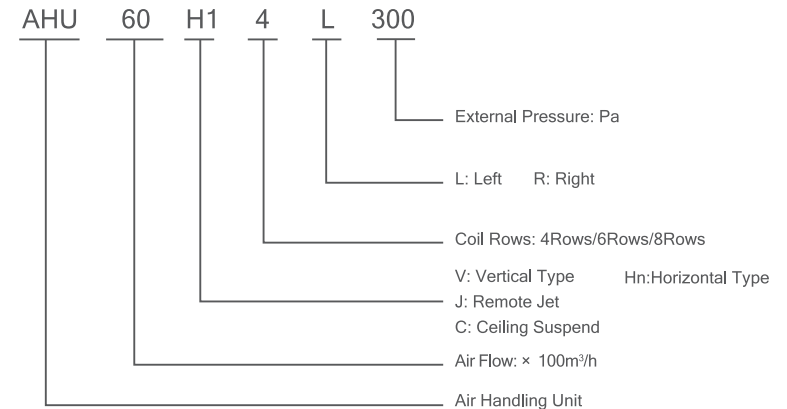
3. Static pressure is measured without filter and air outlet.



Air Handling Unit

The Air Handling Unit is a new generation product designed for high quality requirement, including 235 models with air volume from 1000 to 50000m³/h, cooling capacity from 5kW to 727.9kW, and external static pressure up to 600Pa. There are totally 11 different standard types corresponding with different installation modes, ceiling suspend type, remote jet type, vertical type, horizontal type and so on. The units are widely used in shopping malls, hotels, gyms and industrial applications, etc.

How To Read The Models



Hydraulic Module



- Backup function

For two pump system in which one is backup. It can be automatically switched between two pumps in failure.

- High-class main components

For main components, dustproof and waterproof designed, they have tested at 100°C over 1000 hours.

For the pipe, adopts brass, stainless steel or metal with special coating and anti-rust treatment.

- Good performance

Max flow of Single Pump: 200m³/h, water pump runs more quietly and more efficiently.

- Easy installation and maintenance

The unit can be installed indoor and outdoor, suit for different customer' s requirement.

There are screw connecting and flange connecting, convenient for connecting.

- Savings:

1. Stock cost saving 60%
2. Maintenance cost saving 65%
3. Space saving 30%
4. Installation time saving 50%
5. Design working saving 40%

- More safe

The motor safety class is IP54, insulation class is F.

- Multiple choices for pump

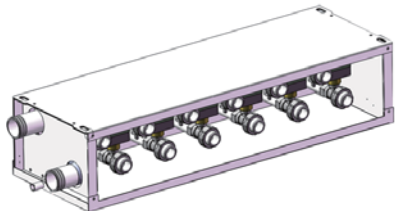
Pump brand can be optional between NANFANG, WILLO and GRUNDFOS

Specification

Content		HM03/II-29FN	HM05/II-31FN	HM07/II-30FN	HM10/II-29FN	HM14/II-28FN	HM18/II-26FN	HM25/II-28FN	HM35/II-30FN	HM40/II-28FN
Recommended cooling capacity corresponding to the range selection	KW	5~15	16~25	26~35	36~45	46~65	66~88	81~115	116~160	161~240
Water flow	m ³ /h	3	5	7	10	14	18	25	35	40
Pump Head	m	25	24	22	26	25	24	28	24	28
Water pressure loss	KPa	6	8	13	11	16	12	12	18	11
Pipe diameter (inlet & outlet)	mm	DN32	DN40	DN40	DN50	DN50	DN65	DN80	DN80	DN100
	inch	1-1/4"	1-1/2"	1-1/2"	2"	2"	2-1/2"	3"	3"	4"
Power supply type	V/Hz	380/3/50, with heat protection, Phase sequence protection and power supply protection.								
Unit rated input power	KW	0.8	1.15	1.2	2.25	2.3	3.1	4.1	4.2	5.6
Dimensions (L*W*H)	mm	787*620*1020			787*620*1020			1300*900*1250		
Net weight	kg	142	150	155	164	170	221	229	233	304
Area	m ²	0.49	0.49	0.49	0.49	0.49	1.04	1.04	1.04	1.46

Content		HM50/II-32FN	HM60/II-30FN	HM80/II-25FN	HM100/II-27FN	HM120/II-33FN	HM140/II-25FN	HM60/II-33FN	HM200/II-25FN	
Recommended cooling capacity corresponding to the range selection	KW	241~300	301~360	370~460	460~580	580~690	700~810	810~930	940~1160	
Water flow	m ³ /h	50	60	80	100	120	140	160	200	
Pump Head	m	25	29	25	27	33	25	33	25	
Water pressure loss	KPa	16	17	22	22	18	20	25	26	
Pipe diameter (inlet & outlet)	mm	DN100	DN100	DN125	DN125	DN150	DN150	DN200	DN200	
	inch	4"	4"	5"	5"	6"	6"	8"	8"	
Power supply type	V/Hz	380/3/50, with heat protection, Phase sequence protection and power supply protection.								
Unit rated input power	KW	5.7	7.6	10.5	11	14	16	22	22	
Dimensions (L*W*H)	mm	1300*900*1250		1700*1150*1500		1800*1150*1500		2300*1150*1700		2500*1200*1700
Net weight	kg	306	317	570	570	575	605	610	610	
Area	m ²	1.46	1.46	1.96	2.07	2.65	2.65	3	3	

Hydraulic Balance Distributor



- Hydraulic balance distributor integrates the electric motorized valve, pressure differential valve, Y-strainer, and intelligent electric control box to realize host and end linked control.
- Easy Installation:
- Integrated flexible Insulated pipe has no right-angled elbow, the water flow is going more smoothly, and the pressure loss is reduced to the extreme.
- Savings:
 - 1.Labor cost saving 50%
 - 2.System pressure decrease 60%
 - 3.Installation time saving 60%
 - 4.Total cost saving 40%
- Application together with integral flexible insulated pipe, which adopts polyethylene chemical cross-linked foam insulation pipe and has good thermal insulation performance. Used as the branch pipe of Hydraulic Balance Distributor, which is flexible, easy to connect, and flexible in arrangement.

